

To explore  
our range of products  
and recipes log on to  
[www.ushacook.com](http://www.ushacook.com)

**USHA**  
COOK

**USHA care** | Toll Free: 1800 1033 111

[usha\\_care@usha.com](mailto:usha_care@usha.com)

## USHA INTERNATIONAL LTD.

Plot No. 15, Institutional Area, Sector 32, Gurugram - 122 001 (Haryana)

Tel : +91-124-4583100, Fax : +91-124-4583200, E-mail: [usha\\_care@usha.com](mailto:usha_care@usha.com) , Website: [www.usha.com](http://www.usha.com)

Regd. Office : Surya Kiran Building, 19 Kasturba Gandhi Marg, New Delhi 110 001, (India) Tel : +91 11 23318114 Fax : +91 11 23318118

ISO 9001 : 2015 Certified Company

**USHA**® © Registered Trademark and Copyright of USHA INTERNATIONAL LTD.  © Registered Trademark of USHA INTERNATIONAL LTD.

**USHA**® *iChef*®

## ELECTRIC PRESSURE COOKER



Instruction Manual



Dear Customer,

*Congratulations!*

You are now a Proud Owner of an USHA iChef Electric Pressure Cooker.

Innovatively designed, using only the highest quality material and components for years of trouble free performance.

Please read these instructions carefully before using.

Best Wishes

## CONTENTS

Introduction to iChef .....	2
Safety instructions .....	4
Know your product .....	6
Operating instructions .....	6
Cleaning and maintenance .....	14
Product technical specifications detail .....	15
Troubleshooting .....	16
Warranty card .....	18





Ignite your culinary genius with iChef: intuitive, intelligent, immersive and indulgent. With its cutting edge technology and deep understanding of Indian kitchens, iChef endeavours to transform simple ingredients into a masterpiece at the touch of a button.

### The iChef Range



Steam Oven



Blender Heater



Smart Air Fryer (5.5 L)



Smart Air Fryer (5 L)



4 Slice Sandwich Grill



Programmable Electric Kettle



Electric Pressure Cooker



Mixer Grinder 4 Jar



Food Processor

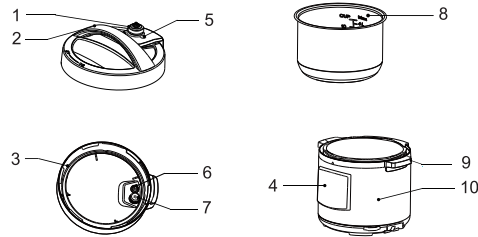
## SAFETY INSTRUCTIONS

1. Read all the instructions
2. This appliance is for household use only. Do not use outdoors.
3. This appliance is not intended for use by persons (including children) with reduced physical, sensory or mental capabilities, or lack of experience or knowledge, unless they have been given supervision or instructions concerning the use by a person responsible for their safety.
4. This appliance shall not be used by children. Keep the appliance and its cord out of reach of children.
5. Children should be supervised to ensure that they do not play with the appliance.
6. The intended usage of this appliance includes household settings, as well as various similar applications such as staff kitchen areas in shops, offices, and other work environments, farmhouses, hotels, motels, and other residential-type environments, and bed and breakfast establishments.
7. If the Supply cord and its socket connector in the appliance is damaged, it must be replaced by the manufacturer, its service agent or similarly qualified persons in order to avoid a hazard.
8. Please turn off and unplug the appliance before cleaning, maintenance or relocation and whenever it is not in use.
9. Do not immerse any part of the appliance except for Bowl, in water or other liquid.
10. The pressure regulator allowing the escape of steam should be checked regularly to ensure that they are not blocked.
11. The container must not be opened until the pressure has decreased sufficiently.
12. The heating element surface is subject to residual heat after use, do not touch.
13. Warning: Avoid spillage on the cord connector.
14. Warning: Misuse may cause potential injury.
15. The appliance is not intended to be operated by means of an external timer or a separate remote-control system.
16. Do not put the pressure cooker into a heated oven.

17. Move the pressure cooker under pressure with the greatest care. Do not touch hot surfaces. Use the handles and knobs. If necessary, use protection.
18. Do not let children near the pressure cooker when in use.
19. Do not use the pressure cooker for a purpose other than the one for which it is intended.
20. The appliance cook under pressure. Scaldes may result from inappropriate use of the pressure cooker. Make sure that the cooker is properly closed before applying heat, see "instructions for use".
21. Never force open the pressure cooker. Do not open before making sure that its internal pressure has completely dropped. See the "instructions for use".
22. Never use your pressure cooker without adding water or food, this would seriously damage it.
23. Do not fill the cooker beyond 2/3 of its capacity. When cooking foodstuffs which expand during cooking, such as rice or dehydrate vegetables, do not fill the cooker to more than half of its capacity.
24. Use the appropriate heat source(s) according to the instructions for use.
25. After cooking meat with a skin which may swell under the effect of pressure, do not prick the meat when the skin is swollen, you might be scalded.
26. When cooking doughy food, gently shake the cooker before opening the lid to avoid food ejection.
27. Before each use, check that the valves are not obstructed. See the instructions for use.
28. Never use the pressure cooker in its pressurized mode for deep or shallow frying of food.
29. Do not tamper with any of the safety systems beyond the maintenance instructions specified in the instructions for use.
29. Only use manufacturer's spare parts in accordance with the relevant model. In particular, use a body and a lid from the same manufacturer indicated as being compatible.

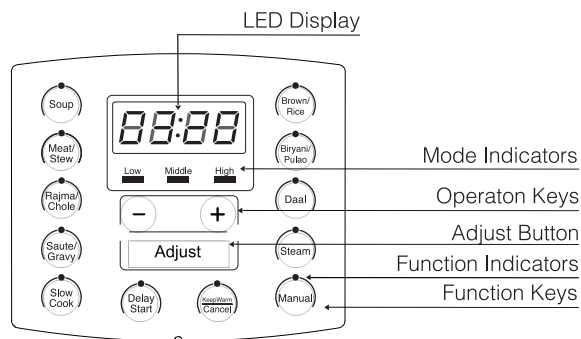


## KNOW YOUR PRODUCT



No	Description
1	Exhaust Valve
2	Lid handle
3	Sealing ring
4	Control panel
5	Float valve
6	Float valve
7	Anti-block shield
8	Inner pot
9	Cooker handle
10	Cooker body

### Control Panel



## OPERATING INSTRUCTIONS

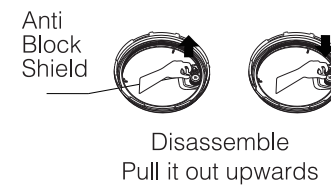
### Important to Note

- Exhaust valve: Pull out the exhaust valve from the lid. Clean the internal side of the exhaust valve and float valve of the lid with brush and cloth at least once a month.
- Sealing ring: Please remove oil and dirt from the sealing ring with detergent and brush.
- Water box: After cooking, the condensed steam may stay in the water box of the external pot as water. Water in the box should be removed for avoiding bad odor, please clean it with soft clean cloth.

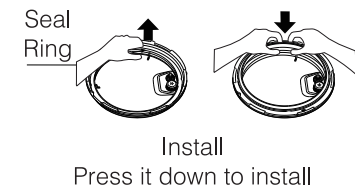
### Disassemble and install the anti block shield and seal ring

- Check if the seal ring and anti block shield are correctly installed in the upper cover before use each time.
- After use, please clean the seal ring and around the anti block shield for avoiding jamming the cover, keep it clean to avoid bad odor.
- Please do not pull the seal ring, otherwise, the distorted seal ring may influence the seal and pressure effect.
- Do not use the damaged seal ring, please replace it at the authorized service centre.

#### Disassemble and install the anti block shield



#### Disassemble and install the seal ring



### Prepare For Cooking

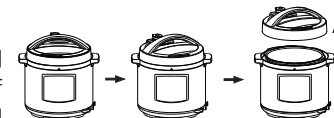
#### 1 Open the lid correctly

- Hold the handle of upper cover, turn it anticlockwise for about 30° till the lid at unlock state, and then lift the upper cover.



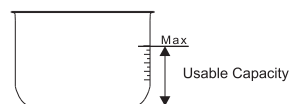
#### 2 Check if the parts and accessories of lid are well installed

- Check if the floater valve and exhaust valve are jammed, confirm if the sealing ring and anti block shield are well installed.



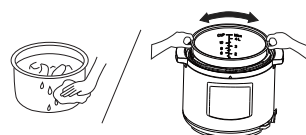
### 3 Take out the inner pot, put the foods and water into the inner pot

- The total amount of foods and water shall not exceed the Max marked on the inner pot.



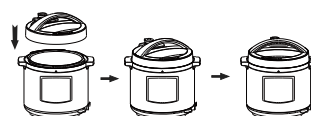
### 4 Put the inner pot into the cooker

- Wipe to clean the external surface of inner pot, foreign object and water are not allowed on the inner surface of electric pressure cooker.
- Turn the inner pot to left and right to ensure good contact with the heating plate.



### 5 Safely close the lid

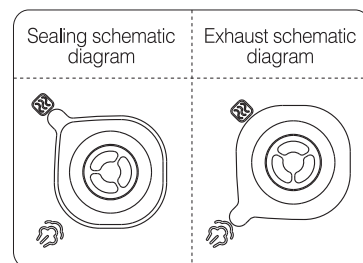
- Before closing the lid, check if the sealing ring is well installed.
- Hold the handle of upper cover, aim the lid as "unlock state", put the top cover horizontally on the cooker body, turn the upper cover clockwise for about 30° to the lock place as "Lock State".



(Picture are for reference only, actual product may differ from picture shown)

### 6 Put the exhaust valve correctly

- When working, please turn the exhaust valve to the sealing place, which means the electric pressure cooker keeps at sealing state;
- For manual exhaust, please turn the exhaust valve handle to the exhaust place, the electric pressure cooker keeps at the exhaust state; when exhausting, do not keep the hands or face above the exhaust opening;
- Check if the floater valve drops down before working (before heating, the floater valve is down).



### Important to Note:

- Switch ON If the buttons are inactive when use, please confirm if the lid is closed at the right place, the buttons are inactive if the lid is not closed correctly for product of these series.
- After cooking, the cooker may automatically enter into the keep warm state (Some funtion). and the indicator display "0H(0 hour), 1H(1 hour), 2H(2 hour)" or "L0:00(0 min), L0:01(1 minute)".

### Tips:

When the cooker is working, it is normal that it makes "cluck" sound, please set your heart at relax when use. To cook a small amount of foods, the inner pot may possibly be lifted when opening the lid, please shake the lid to drop the inner pot in the cooker body and then remove the lid.

### Safely open the lid

1. Cut off power supply or remove the power plug
2. Exhaust method
  - a. Quickly open the lid (For non-fluid foods)

Turn the exhaust valve to the exhaust place for exhausting, the unit by pressing steam release button "①" till the float valve drops down. B. Generally open the lid Keep the electric pressure cooker cool naturally till the float valve drops down.

3. Open the lid

Turn the upper cover anticlockwise with the left hand, turn it to the cover open limit place, lift the upper cover with the right hand to open the lid. Do not open the lid before the pressure in the pot has been completely released, do not open the lid fiercely if it is difficult to open. Do not pull out the exhaust valve when turning the exhaust valve. After cooking fluid foods (daal & soup), do not turn the exhaust valve or press the steam release button please cut off power supply to make it cool naturally till the float drops before opening the lid.










## Function selection operation guidelines

FUNCTION	OPERATION GUIDELINES
Keep Warm/Cancel	1. Under working or setting state, press “Keep Warm/Cancel” button to cancel the current work state and return standby state. 2. Under standby state, press “Keep Warm/Cancel” button to enter into keep warm state.
Soup/Meat/Stew/Rajma/Choley/Brown Rice/Biryani/Pulac/Daal/Manual	Under standby state, press function button, the indicator light is on and the digital screen shows pressure working time. Press “+” or “-” button to adjust the pressure working time (except rice function), 10 seconds later if no button is pressed, and the product automatically starts cooking. The digital screen starts countdown as soon as the pressure rise to working pressure.
Saute	Under standby state, press “Saute” button, the indicator light is on and the digital screen shows working time. 10 seconds later if no button is pressed, the product automatically. Starts countdown and enters to standby state when it finishes working.
Slow Cook	Under standby state, press “Slow cook” button, the indicator light is on and the digital screen shows working time. Press “+” or “-” button to adjust the working time, 10 seconds later if no button is pressed, the product automatically and starts countdown.
Automatic keep warm	Press the function button repeatedly to turn on or off the automatic keep warm after cooking. The default state is on. (Except Saute function)
Flavor Adjust	Before the program start, you can press “Adjust” button to change the food flavor for “Less” or “Normal” or “More”
Delay Cooking	Before the program start, press “Timer” button to set the delay cooking timer, Press “+” or “-” to adjust the delay time, 10 seconds later if no button is pressed, the product starts delay time countdown. When it countdown to the end, the program starts working.
Sound on and off	Under standby state, long press “-” button for 3 seconds to turn off sound, and long press “+” button for 3 seconds to turn on sound.


## Safety precautions for using the product


To avoid personal injury and property loss, be sure to observe the following safety precautions.

- Meanings of the marks:

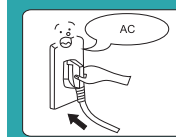
 Means “Forbidden” items	 General Forbid	 Disassemble Forbidden	 Wet hands Forebiden
 Means “Mandatory” items	 Contact Forbidden	 Spray Water Forbidden	
	 Must be executed	 Remove the Power Plug	

- The danger caused by mistaken use if following warnings are neglected includes to two grades

 **Warning** | It may possibly cause death or serious injury if the warning items are disobeyed.

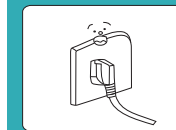
 **Caution** | It may cause physical injury or property damage if the caution items are disobeyed.

### **Warning**



#### **Use correct power outlet (Refer to the product rating label)**

- Failure to use correct electricity can cause fire or electric shock.
- Danger of fire if the bad socket is adopted.



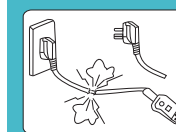
#### **A socket shall be used alone**

- A socket of more than 10A rated current with grounding wire shall be used alone;
- If shared with other electrical appliances, the socket may cause abnormal heat and result in fire.



#### **It is strictly prohibited to use other lid**

- It is strictly prohibited to use other lid for heating, and in the (switching on) process, the use of non-original lid is not allowed.
- As this may cause electric shock or safety hazards.



#### **Stop using if the power cord is damaged**

- Replace the damaged power cord with new cord purchased from the manufacturer or authorized repair center.



#### Do not put foreign objects

- It is prohibited to insert metal shavings, needles and other foreign matter in the gap.
- As this may cause electric shock or movement anomalies.



#### Place the appliance in a location out of reach of infants

- Place the appliance in a location out of reach of infants.
- To avoid electric shock and scald.



#### Modification is prohibited

- Modification or repair by non-professionals is prohibited.
- Violation may cause a fire or electric shock.
- Repair or replacement of parts shall be made in an Usha authorized service centre.



#### Products may not be immersed or sprinkled in water

- Doing so could cause electric shock and electrical short circuits.



#### Warning

##### Warning on Opening the lid

- When the electric pressure cooker is not working, there isn't pressure in the pot, the float valve is down;
- When the electric pressure cooker is working, pressure in the cooker rises, float valve ascends; do not fiercely open the lid before the pressure has been completely released;
- If it is difficult to open the lid, please do not open it fiercely, otherwise, it may cause scalding or physical injury.

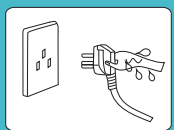


#### Check periodically

- Be sure to check periodically the anti block shield and exhaust valve core to make sure that they are not blocked;
- Do not cover the exhaust valve with heavy object or replace it with other object.

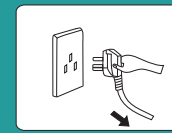


#### Caution



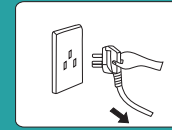
#### Never pull the plug with a wet hand

- To avoid electric shock.



#### When pulling the plug, you must pinch the plug

- When pulling the plug, you must pinch the plug;
- Do not pull the power cord, otherwise it will damage the cord, causing electric shock and short circuit.



#### Unplugging when not in use

- Otherwise, it may produce leakage, fire or failure.



#### While Working, Never move your hand close to the exhaust valve

- In cooking process, never move your hands to close to the exhaust valve to avoid burns.
- During cooking, do not cover the vent with a cloth and other items.



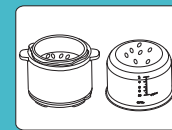
#### When the cooker is working, please do not touch the lid

- When the cooker is working, lid has high temperature, do not touch it.
- Otherwise, it may possibly cause scalding.



#### The total amount of food and water can not exceed Max scale

- The total amount of food and water can not exceed Max scale, otherwise food may be cooked unfamiliar, or cause malfunction.



#### Do not use a pot other than the dedicated pot

- When there is foreign object on the bottom of pot and heating plate surface, remove the foreign object before use.
- Otherwise, it may cause overheating and work abnormalities etc.



#### Do not put the inner pot on other appliance for heating

- In order to avoid deformation or fault.
- Please use the special inner pot.



#### When moving the product, please hold the handle of cooker body

- When moving the product, do not directly hold the handle of lid for avoiding lid dropping.

## CLEANING AND MAINTENANCE

1. Periodically clean the cooker and remove oil and dirt if it is stored on the table and clean after each use.
2. Put the electric pressure cooker 30cm away from other kitchen appliances.
3. Before cleaning and maintenance, please unplug the power cord until the product cools.
4. Remove the lid and inner pot, clean with detergent first, then rinse well with water, and wipe dry with a soft cloth.
5. Clean the internal side of the lid with water, the seal ring, block proof cover, exhaust valve core and float valve can be removed for washing, timely and correctly install them after washing, and then dry the internal side of lid with cloth.
6. Wipe clean the cooker body with a soft cloth, and it is prohibited to soak the cooker body in water or spray water to it.

### Maintenance of inner pot

- Do not empty. It may cause yellowish and spotted inner pot or distorted bottom, if it is empty for a long time.
- Do not use it to store the acidic food, alkali and preserved foods for a long period. Although the inner pot has excellent anti-corrosion performance, it may cause corrosion of certain degree, the suggested time of keep warm shall not exceed 2 hours.
- Keep it clean to prolong the service life. Do not immerse it in water for a long period. Clean the inner pot with soap, mild detergent or warm water to remove dust, oil and dirt.
- Do not use a metal shovel or other hard tool, otherwise it will damage the inner surface of pot.

### Daily Check And Maintenance

For use the product safely with a longer service life, please carefully check and maintain it.

If followings occur	Solutions
<ul style="list-style-type: none"> <li>• Power cord and plug is expanded, deformation, damaged and it color is changed.</li> <li>• One part of the power cord and plug are hotter.</li> <li>• Power cord is flexible with discontinuous power supply.</li> <li>• The electric pressure cooker has abnormal heating and generates bad odor.</li> <li>• There's abnormal noise or vibration when supply power.</li> </ul>	Stop using, and repair it by the authorized repair center.
<ul style="list-style-type: none"> <li>• There's dust or dirt on the plug or socket.</li> </ul>	Remove the dust or dirt.

## PRODUCT TECHNICAL SPECIFICATIONS DETAIL

Model no	iChef Electric Pressure Cooker
Voltage / Frequency	230 V AC / 50 Hz
Power	1000 W
Capacity	6 L
Working Pressure	70 kPa

### Note:

In view of the USHA policy of continuous improvement. Specification may change without notice.

## TROUBLESHOOTING

When followings occur, it is not the cooker fault, please carefully check once before sending it for repair.

S/N	Problem	Reason	Solution
1	Difficult to close the lid	Sealing ring not installed properly	Position the sealing ring well
		The floater valve clamps the push rod	Lightly push the push rod
2	Difficult to open the lid	Float valve in the popped-up position	Press the float valve lightly with a chopstick.
		Pressure exists inside the cooker	Open the lid after the pressure is completely released.
3	Steam leaks from the lid	Sealing ring installed improperly	Install the sealing ring as required
		Food debris attached to the sealing ring	Clean the sealing ring
		Sealing ring damaged	Replace the sealing ring only provided by Authorized Service Centre
		The lid is not closed correctly	Close the lid correctly
4	Steam leaks from float valve	Food debris on the float valve gasket	Clean the float valve gasket
		Float valve gasket worn-out	Replace the float valve gasket only provided by Authorized Service Centre
5	Float valve unable to rise	Too little food and water in inner pot	Add water and food according to the recipe
		Steam leaks from the lid or exhaust valve	Send to the Authorized Service Centre for repair

6	Steam comes out from exhaust valve non-stop		Exhaust valve not in sealing position	Turn the exhaust valve to the sealing position
			Pressure control fails	Send to the service center for repair
7	Power indicator doesn't light on		Power socket bad contact	Please check the power socket
8	All indicators flash	Display screen displays E1	Bottom sensor fault	Send to the service center for repair
		Display screen displays E2		
		Display screen displays C1	High temperature since there isn't water in the inner pot	Add water according to the requirement
			High temperature since there isn't water in the inner pot	Put the inner pot correctly
		Display screen displays E8	Pressure switch fault	Send to the service center for repair
9	Rice half cooked or too hard		Too little water	Add water accordingly
			Lid opened prematurely	After cooking cycle completes, leave the lid on for 5 more minutes.
10	Rice too soft		Too much water	Reduce water accordingly

## WARRANTY CARD

This appliance has a warranty for 2 years on product against all manufacturing defects from the date of sale. In the event of any complaint, please contact USHA Care at toll-free no. 1800 1033 111.

**The warranty is valid only when:**

1. The appliance has been installed, used and maintained in accordance with the instruction manual.
2. The warranty card and cash memo duly signed by the Authorized Dealer are presented with the complaint.
3. The appliance has not been opened or tampered with, by any unauthorized person.

**This warranty does not apply for:**

1. Damages due to chipping, peeling, plating and denting.
2. Breakage or damage to components made out of Bakelite, Urea, ABS, SAN and such plastic materials, rubber parts and cord.
3. Normal wear and tear of parts.
4. Damage resulting from accidents, mishandling or negligence on part of the customer. Liability for consequential loss or damage is neither accepted nor implied.

S. No: \_\_\_\_\_ DATE:, \_\_\_\_\_

CASH MEMO: \_\_\_\_\_

OWNER'S NAME & ADDRESS: \_\_\_\_\_

DEALER'S NAME AND ADDRESS: \_\_\_\_\_

Dealer Stamp	
--------------	--

## NOTES

This image shows a single sheet of white paper with horizontal ruling lines. The lines are evenly spaced and run across the width of the page. There are no margins, text, or other markings on the paper.



NOTES

This image shows a single sheet of white paper with horizontal ruling lines. The lines are evenly spaced and run across the width of the page. There are no margins, text, or other markings on the paper.