

To explore  
our range of products  
and recipes log on to  
[www.ushacook.com](http://www.ushacook.com)

**USHA**  
COOK

**USHA care** | Toll Free: 1800 1033 111

[usha\\_care@usha.com](mailto:usha_care@usha.com)

## USHA INTERNATIONAL LTD.

Plot No. 15, Institutional Area, Sector 32, Gurugram - 122 001 (Haryana)

Tel : +91-124-4583100, Fax : +91-124-4583200, E-mail: [usha\\_care@usha.com](mailto:usha_care@usha.com) , Website: [www.usha.com](http://www.usha.com)

Regd. Office : Surya Kiran Building, 19 Kasturba Gandhi Marg, New Delhi 110 001, (India) Tel : +91 11 23318114 Fax : +91 11 23318118

ISO 9001 : 2015 Certified Company

**USHA**® © Registered Trademark and Copyright of USHA INTERNATIONAL LTD.  © Registered Trademark of USHA INTERNATIONAL LTD.

**USHA**® *iChef*®

## BLENDER HEATER



Instruction Manual



Dear Customer,

*Congratulations!*

You are now a Proud Owner of an USHA iChef Blender Heater.

Innovatively designed, using only the highest quality material and components for years of trouble free performance.

Please read these instructions carefully before using.

Best Wishes

## CONTENTS

Introduction to iChef .....	2
Safety instructions .....	4
Know your product .....	8
Operating instructions blending jar .....	11
Operating instructions grinding jar .....	17
Cleaning and maintenance .....	19
Product technical specifications detail .....	21
Troubleshooting .....	22
Warranty card .....	24





Ignite your culinary genius with iChef: intuitive, intelligent, immersive and indulgent. With its cutting edge technology and deep understanding of Indian kitchens, iChef endeavours to transform simple ingredients into a masterpiece at the touch of a button.

### The iChef Range



Steam Oven



Blender Heater



Smart Air Fryer (5.5 L)



Smart Air Fryer (5 L)



4 Slice Sandwich Grill



Programmable Electric Kettle



Electric Pressure Cooker



Mixer Grinder 4 Jar



Food Processor

## SAFETY INSTRUCTIONS

Before using the electrical appliance the following basic precautions should always be followed including the following:

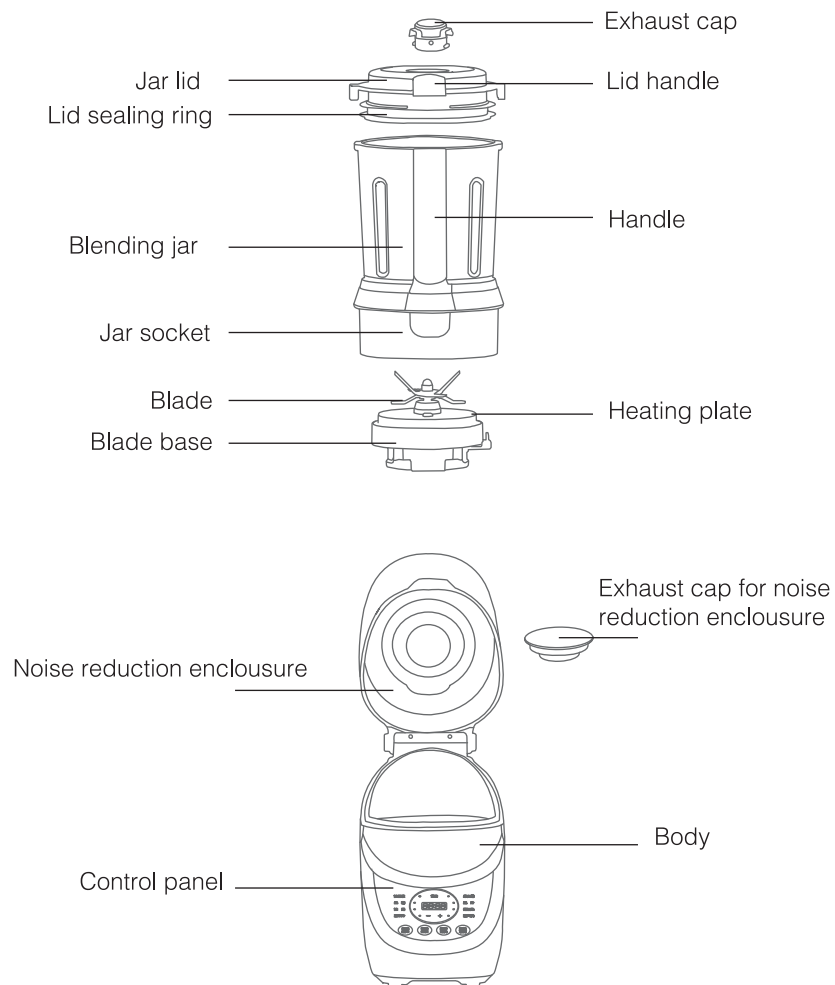
1. Read all instructions before using.
2. Before using check that the voltage of wall outlet corresponds to the one shown on the appliance nameplate.
3. This appliance is not intended for use by persons (including children) with reduced physical, sensory or mental capabilities, or lack of experience or knowledge, unless they have been given supervision or instructions concerning the use by a person responsible for their safety.
4. Make sure that this product will not be used as a children's toy, please use and store it in a place where children cannot touch it.
5. This product is strictly forbidden to be placed in a humid place or near a fire or heat source (such as a stove), to avoid accidental fire/ product damage.
6. It is forbidden to use on inclined, unstable or poor heat-resistant surfaces, so as not to cause the product to fall from a high place and be damaged or cause a fire.
7. Before use, please check whether the power cord, jar lid sealing ring, blade and other components are damaged. If there is any damage, please stop using it and contact the company's customer service personnel to solve it.
8. Before the machine starts working, please make sure that the mixing jar, jar cover and exhaust cover are correctly installed in place.
9. Do not use accessories other than those given along with this product. Using non standard accessories may cause product damage, fire or personal injury.
10. Do not use low-quality power strip adapters or damaged power strips to avoid fire or electric shock.
11. When unplugging the plug, please pinch the plug and unplug it. Do not pull the power cord. Do not unplug or plug in the power plug with wet hands, so as not to cause electric shock.
12. Do not bend the power cord excessively, tie it up or place it near high temperature, squeeze it with heavy objects, or hang it on sharp objects, otherwise the power cord may be damaged and cause fire and electric shock. The plug must be kept clean and dry.
13. If the supply cord is damaged, it must be replaced by the manufacturer, its service agent or similarly qualified persons in order to avoid a hazard.
14. While in operation do not leave the product unattended, please turn off and unplug the power plug when leaving.
15. Before assembling, disassembling or cleaning or when the product is not in use, please make sure that the machine is not running and the power is cut off.
16. When making hot drinks, the surface of the jar body and the metal parts of the jar lid will be very hot. Do not touch the glass directly with your hands or put your face close to the glass. Do not let children approach it to avoid burns.
17. When the product is working, it is forbidden to touch the running accessories (such as blades, etc.).
18. When using this product, please do not hang long hair, scarves or ties over the product; it is forbidden to extend kitchen tools (such as spoons, chopsticks, etc.) into the mixing jar.
19. When the product is working, it is strictly forbidden to directly lift the jar body or open the jar cover.
20. Do not move the product while it is working, so as not to cause burns due to overflow of food in the jar.
21. No-load operation and overload use of this product are strictly prohibited.
22. Do not use this product to stir other items other than food.
23. Never use the blender jar as a container (freeze, cook or sterilize).
24. Never hit the blender jar with hard objects.
25. Non-professionals are not allowed to disassemble parts of the product at will, otherwise there may be dangerous situations such as electric shock injury, fire, machine damage, etc. If there is a fault, please go to the designated maintenance point for repair.
26. During use, if the machine emits abnormal sounds, smells, or the appliance is overheated or smokes, please stop using it immediately, unplug it and contact the Authorized Service Centre or call at **USBA Care** toll-free number 1800-1033- 111.
27. The working time of this product must ensure that the continuous whipping does not exceed 6 minutes. During operation, if the machine base is overheated, it should be stopped for about 20 minutes, and the operation can only be continued after it cools down.



28. This product is equipped with an overheating protection device. When it is abnormally used or the motor is seriously overloaded, the product will automatically stop for protection. If it still cannot be started after 30 minutes of protection, please go to the company's maintenance network for repairs. Do not disassemble the machine yourself.
29. If the product is stuck during use, please turn off the power immediately, unplug the power plug, remove the jar body, take out the food that has jammed the blade, and continue to use it after the motor cools down.
30. This product has a jar lid memory function: If the hot drink function accidentally opens the jar lid during use and the power is turned off for about 2 minutes, it can continue to work. After 2 minutes, the machine will automatically return to the initial power-on state. You need to change the ingredients and select the function again to operate.
31. Do not put the accessories into the dishwasher, disinfection cabinet for cleaning and disinfection, or heat them in the microwave oven, so as not to deform or damage the glass or break the glass.
32. Do not put the blender jar directly into the refrigerator or freezer, because the rapid cooling and low temperature will cause "condensation" inside the jar holder and can cause damage to the machine.
33. It is strictly forbidden to use chemicals or volatile substances to clean this product, otherwise it may cause discoloration or fire.
34. When cleaning, it is strictly forbidden to directly rinse the appliance with water. Never immerse the main unit, blender jar, power cord or plug directly in water or other liquids.
35. When cleaning, be careful not to let water into the coupler, if there is water, it must be wiped dry before use.
36. The blade device of this product is sharp, please do not directly touch the blade with your hands during operation and cleaning to prevent the blade from hurting your hands.
37. In order to keep your machine clean and hygienic, please wash it in time after each use, as irregular cleaning might make the cleaning of the appliance difficult.
38. The added ingredients and drinking water should not exceed the maximum water level of each function on the jar body.
39. Due to the high horsepower of the motor, there is a large sound fluctuation at the moment of starting the machine, which is a normal phenomenon.

40. Do not put ingredients and liquids over 80° C for whipping to prevent the food in the jar from splashing and hurting people.
41. Fresh soy milk is easy to deteriorate if left for a long time inside the blender. It is best to drink immediately after the soy milk is prepared or maximum within 2 hours at best when kept at room temperature.
42. It is normal for the bottom of the heating plate to turn blue after working.
43. Please wait at least 10 minutes after each use of the machine before using it again.
44. After the machine is finished working, the bottom of the hot jar may be slightly sticky due to content sticking to it, which is a normal phenomenon, and it can be used normally after cleaning with a steel wool ball.
45. This machine is limited to ordinary family indoor use, do not use it outdoors or for commercial and industrial purposes.
46. Please choose the required function correctly according to the instruction manual, and do not choose the wrong function; if you choose the wrong function, it may cause overflow and poor results.

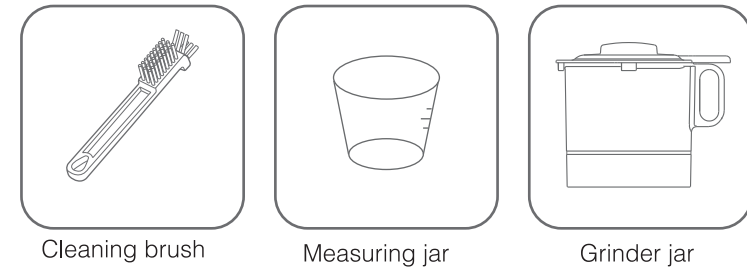
## KNOW YOUR PRODUCT



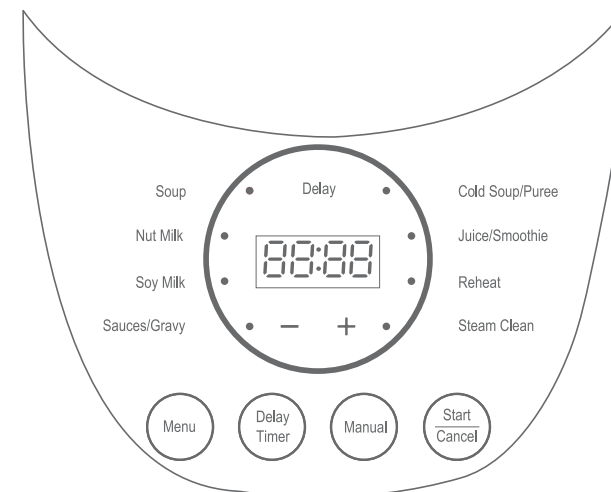
### Note:

The material of the blending jar is borosilicate glass, the above picture is for reference only, the specific product appearance and color are subject to the actual product.

## ACCESSORIES



## CONTROL PANEL



Function	Usage	Heat	Blend	Function selection	Time
Soy milk	Uses: Mainly beans are boiled over low heat to make soy milk. Capacity: The total capacity of ingredients and water should not exceed 800 ml.	√	√	Select the function by touch "Function" button	Around 28 minutes
Sauces/ Gravy	Uses: to make the Sauces/ Gravy of Tomato & Onion Capacity: The total capacity of ingredients and water should not exceed 1000 ml.	√	√	Select the function by touch "Function" button	Around 23 minutes
Soup	Uses: To make different kinds of soups. Capacity: The total capacity of ingredients and water should not exceed 1000 ml • It is forbidden to use large keels and barrel bones to prevent overflow • Fish ingredients need to be filtered before eating.	√	√	Select the function by touch "Function" button	Around 26 minutes
Col Soup	Uses: to make cold soup & purees. Capacity: The total capacity of ingredients and water should not exceed 1000 ml.	√	√	Select the function by touch "Function" button	Around 24 minutes
Nut milk	Uses: Mainly use nuts to make nut milk. Capacity: The total capacity of ingredients and water should not exceed 1000 ml.	√	√	Select the function by touch "Function" button	Around 20 minutes
Juice/ Smoothie	Uses: Use fresh fruit or frozen fruit to make various flavors of juice or smoothies. Capacity: The total capacity of ingredients and water should not exceed 1000 ml.		√	Select the function by touch "Function" button	Around 2 minutes and 30 seconds
Steam clean	Uses: Used for high temperature disinfection. Capacity: The total capacity of water is about 500 ml • Water volume exceeding 500 ml will result in poor cleaning effect.	√	√	Select the function by touch "Function" button	Around 5 minutes
Speed and delay time of the following functions can be adjusted by touching the "+/-" button.					
Reheat	Uses: Used to heat liquid ingredients in a glass. Capacity: The total capacity of ingredients and water should not exceed 1000 ml. Adjustable maximum temperature 90°C, minimum temperature 50°C.	√	√	Select the function by touch "Function" button	Around 60 minutes
Delay	Purpose: Delay according to your own needs. Capacity: The total capacity of ingredients and water should not exceed 1000 ml. The maximum adjustable delay time is 12 hours, and the minimum time is 1 hour.	√	√	After selecting the function,, touch "Delay" button	Around 12 hours
Manual	Uses: Instantly start the machine, suitable for quickly blend food or cleaning the jar. Capacity: The total capacity of ingredients and water should not exceed 1000 ml. The adjustment speed ranges from 1-H.		√	Touch "Manual" button	Around 2 minutes
Start/ Cancel	Used to start or cancel a function.	After selecting the function, press this button again to enter the working state. After entering the working state, press this button to cancel.			

#### Note:

The time required to complete all functions will vary according to voltage, environment, temperature, ingredients, etc., which is a normal phenomenon. Adjust the Timing of blending & Heating as per your recipe & taste/preference.

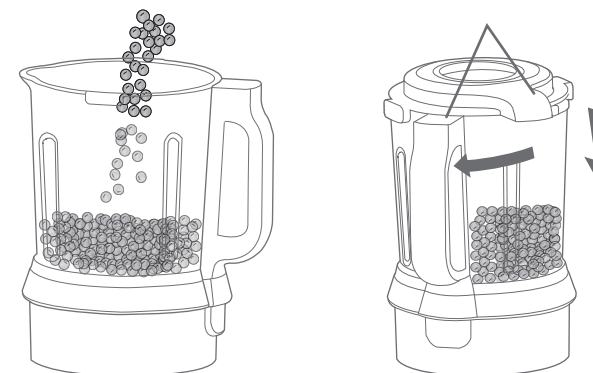
## OPERATING INSTRUCTIONS BLENDING JAR

### 1 Prepare ingredients

Before initial use, thoroughly wash parts that come into direct contact with food (see "Cleaning and Maintenance"). Prepare ingredients according to recipes or user needs. Large pieces of ingredients need to be cut into small pieces with a side length of no more than 5 cm. Meat ingredients need to be cut into strips and ribs to be removed. Hard-skinned and hard-core ingredients need to be peeled and cored. After cleaning, put them in blender jar , the total capacity of the ingredients added cannot exceed the maximum water level of each function as mentioned on the jar.

### 2 Install the lid

Put the lid on the blender jar with a little force to ensure that the lid is completely attached to the mouth of the jar, and then turn clockwise until the ear buckle on the lid is completely fastened to the body of the jar.

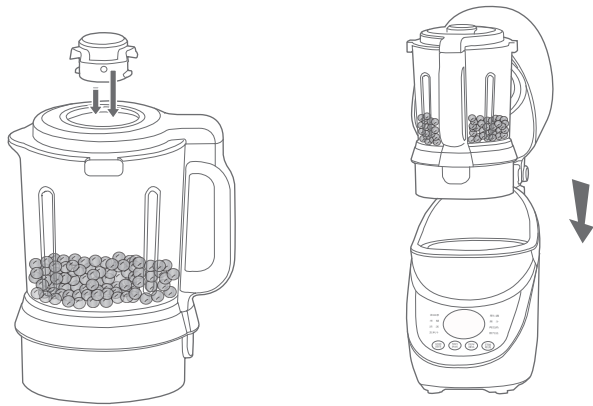


### 3 Install the jar lid vent cover

Align the jar lid vent cover with the center slot of the jar lid and insert it to install it.

### 4 Install the blender jar

Lift the blender jar with your right hand, press down slightly to install it on the main unit.

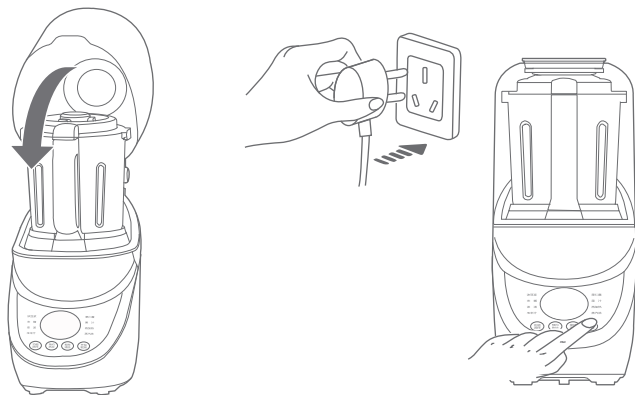


#### 5 Pull down the noise reduction enclosure

Pull down the noise reduction enclosure to cover the entire blender jar, and then align the exhaust cover of the noise reduction enclosure with the position of the vent hole on the top of the noise reduction enclosure and install it.

#### 6 Select menu

Turn on the power, the machine beeps, the display screen lights up, and enters the function selection state, touch the "Menu" button to select a function, or press the "Manual" button, and then press the "Start/Cancel" button to enter the working state.



#### 7 Appliance operation

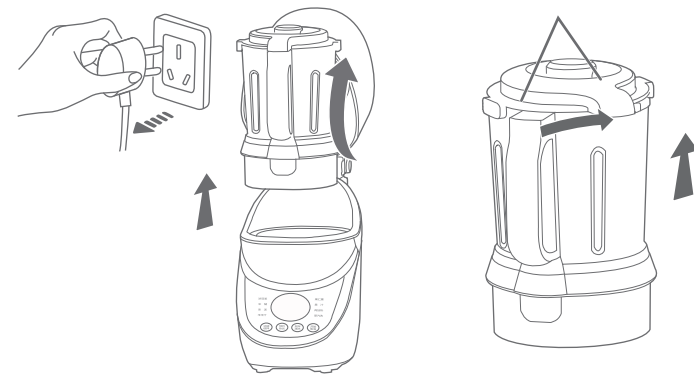
The appliances blends and heats according to the default time of the function or the speed and time set manually.

#### 8 End of function

After the blades stop, disconnect the power, open the noise reduction enclosure upwards, and remove the blender jar.

#### 9 Remove the lid

Rotate the lid counterclockwise and then lift the lid up; the exhaust cover can be removed by pulling it up



#### Note:

Before installing the lid, please make sure that the sealing ring of the lid has been correctly installed on the lid.

The lid has an opening protection device, if the lid is not in place, the product will not be powered ON.

# How to operate the control panel

## Non Delay functions

- 1) Take "Soy milk" as an example.  
Touch the "menu" button to select the function of "Soy milk", the digital tube will display the required time of the current function; Then press the "Start/Cancel" button to start the blender, the corresponding function indicator light stays on, and the digital tube displays along the edge.
- 2) The blender will automatically start.
- 3) After the blender is working, if you need to switch or cancel the function, you can press the "Start/Cancel" button to enter the standby state.



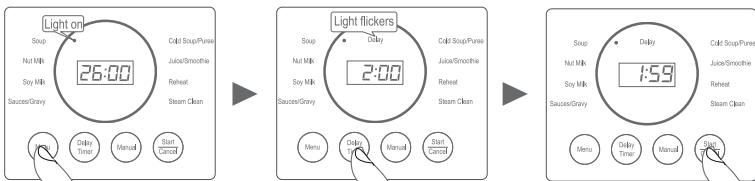
## Delay functions

- 1) Take "Soup" as an example: Touch the "Menu" button to select the "Soup" function.
- 2) Press the "Delay" button again to set the delay time, the delay light flickers, and the digital tube displays the default time of 2 hours.
- 3) At this time, touch "+" or "-", and the time will increase or decrease in intervals of 30 minutes, and the user can set it according to needs. The maximum delay time is 12 hours and the minimum is 1 hour.
- 4) Press the "Start/Cancel" button again, the appliance enters the delay state of the selected function, and the digital tube counts down.

Delay time is the time when the current function "Soup" is completed.

- 5) After the blender is working, if you need to switch functions or change the delay time, you can press the "Start/Cancel" button to cancel the current state.

## Delay is only applicable to hot drink functions.



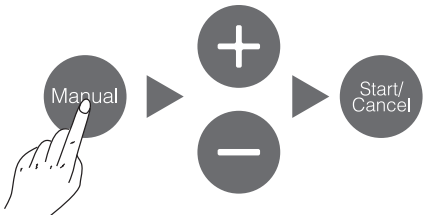
## NOTE:

- When blending hot food, do not open the exhaust cover to add ingredients to prevent the hot food in the jar from splashing and causing burns.
- When making hot drinks, if the jar lid is accidentally opened and the power is turned off for about 2 minutes, it can continue to work. After 2 minutes, the appliance will automatically return to the initial power-on state, and it is necessary to replace the ingredients and select the function again to operate.

## Manual Function

Manual function is designed for special needs, and the blending speed of the function can be set by the user according to the requirements.

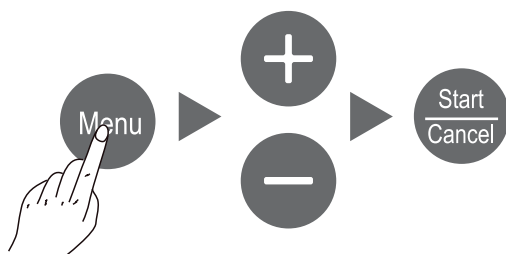
- 1) Press "Manual" button to blend the food. The default blending speed of the blender is level 5; Each time the "+" or "-" button is pressed, the speed will increase or decrease by 1 level, and the user can choose according to the amount of drink and personal preference.
  - 2) Press the "Start/Cancel" button to enter the blending state directly.
- The default blending time is 2 minutes; user can press the "Start/Cancel" button to stop blender during operation.



Speed	Purpose
Level 1-2	Suitable for adding some condiments, honey and other liquid foods and mixing them evenly.
Level 3-4	Suitable for blending soft food, such as: tomatoes, strawberries and other fruits and vegetables.
Level 5-6	Suitable for blending medium-hard food, such as apples, potatoes and other fruits and vegetables.
Level 7-H	Suitable for blending hard food, such as: carrots, soybeans, etc.

### Reheat function

- 1) Press the "Menu" button to select the "Reheat" function, and the blender will display the default temperature. Each time the "+" or "-" button is pressed, the temperature will increase or decrease by 5 degrees; user can choose according to their personal needs.
- 2) Press the "Start/Cancel" button to directly enter the heating state.
  - The maximum heating temperature can be adjusted to 90°C and the minimum temperature is 50°C.
  - This function defaults to a maximum reheat time of 60 minutes. When the temperature in the jar reaches the set temperature, it will be in keep warm state.



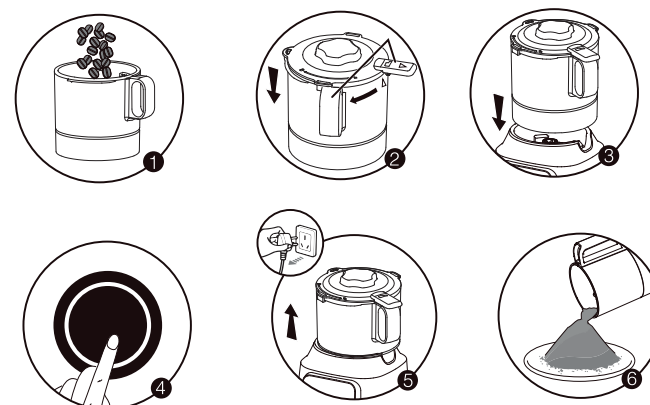
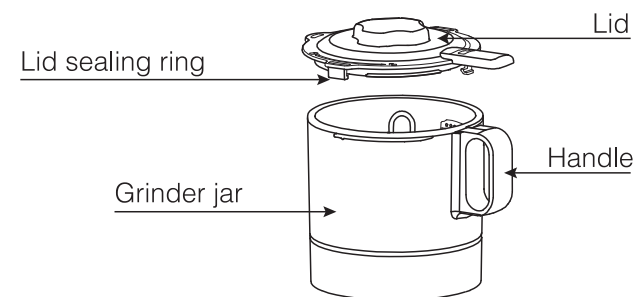
### NOTE:

When the temperature of the food in the jar is higher than 60° C, please do not blend at a speed higher than lever 4. In order to avoid food spillage, resulting in the risk of scalding.

### Blending completed

- 1) After blending is completed, the blender will make a beep and stop running. After the power is cut off, the noise reduction enclosure can be opened and the blending jar can be removed only after the blades have completely stopped rotating.
- 2) Turn the jar counterclockwise to open the lid and pour out the drink; if it is a hot drink, pay attention to the steam gushing out of the jar at this time, and be careful of burns.
  - When making soup, if the ingredients contain bones (such as fish bones), the drink may contain fine bone particles after the function is completed, please filter it before consuming.

## OPERATING INSTRUCTIONS GRINDING JAR



1. Take dried or dehydrated ingredients and place them evenly in the grinder jar. The degree of dryness of the food will affect the grinding effect.

**Note: Do not overfill the jar with the ingredients.**

2. Ensure that the jar lid is correctly positioned on the jar, then place the jar lid on the grinder jar and rotate it clockwise into place.

**Note: To open the lid, you need to turn the lid counterclockwise to the opening and closing position, and then lift the lid up to open the lid.**

3. Align the position of the handle of the grinder jar with the groove of the main unit and press it firmly to install it on the main unit.



4. After the power is turned on, the appliance defaults to the grinding level L4, press the "Start" button to start, and the user can press the +/- button to select the grinding level according to the preference.
5. After the grinding is finished, wait for the blade to stop running, disconnect the power supply, and remove the grinder jar by lifting it upwards.
6. Pour out the food in the grinding cup. If you are not satisfied with the grinding effect, you can grind it again or increase or decrease the ingredients appropriately.
  - If the grinding is not over and you are satisfied with the grinding effect, please press the "Start/Cancel" button to stop.
  - The grinding effect from L4 to L1 is from fine to coarse, please select the appropriate grinding level according to your needs

**Note:**

1. This jar is only suitable for grinding dry and hard ingredients. If you want to grind peanuts, almonds and other oily ingredients, you need to fully dry or fry them first.
2. Grinding non-dry ingredients will affect the grinding, and the repeated grinding process will cause the temperature of the ingredients in the jar to be too high and generate water vapor.
3. It is strictly forbidden to grind fruits, vegetables, hot food and clear water.
4. The amount of ingredients added cannot exceed the specified capacity.
5. Do not exceed the specified capacity, otherwise the lid buckle will be pushed open during work, the lid will fall off, and the food in the jar will splash.
6. Please wait for at least 10 minutes after each use of the machine before using it again.
7. If one grinding can not achieve the required delicate effect, you can grind it again, but please pay attention to the food in the jar to prevent multiple grindings from burning.
8. No-load operation and overload use are strictly prohibited.

## CLEANING AND MAINTENANCE

### Clean the blender jar

- 1) Quick cleaning: After the drink is poured out, add 1000 ml of water to the jar, touch the "Manual" function, and then press the "Start/Cancel" button to automatically clean the jar.
- 2) Steam cleaning: After the drink is poured out, add 250ml of water (about 2 jars of water) into the jar, touch the "menu" button, select the speed of blending & then press the "Start/Cancel" button to automatically clean the jar.
  - The above automatic cleaning function can only assist in removing part of the remaining food in the jar, and cannot completely replace the cleaning work. After this function is over, please wipe it with clean water and a soft cloth.
- 3) Direct cleaning: Turn off the power, clean the outside of the jar with a damp cloth; clean the inside of the jar with the cleaning brush that comes with it.
  - Never immerse the blender jar in water to clean it.
- 4) If it cannot be cleaned in time or the residue at the bottom of the jar is difficult to clean, first fill the jar with warm water and add a few drops of detergent to soak, then use a cleaning brush to scrub in the same direction, and then rinse with clean water.

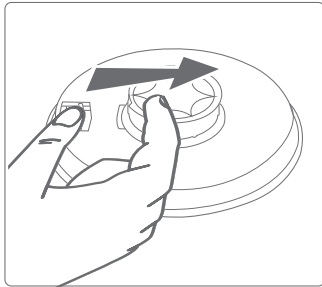
**NOTE:**

- When cleaning, prevent water from entering the coupler at the bottom of the jar. If it gets wet accidentally, it needs to be dried before use.
- **The blade is sharp**, be careful not to hurt your hands when cleaning.

### Clean the lid

1. The jar lid can be immersed in water and cleaned directly; the jar lid and sealing ring need to be installed back to its original position after being removed for cleaning.
2. The exhaust cover can be disassembled and cleaned, and needs to be installed in place after cleaning.
  - Do not pull when disassembling the sealing ring, if it is pulled and deformed, it will affect the sealing effect.
  - After the sealing ring and exhaust cover are cleaned, they must be wiped dry before assembly to prevent odor from residual water.

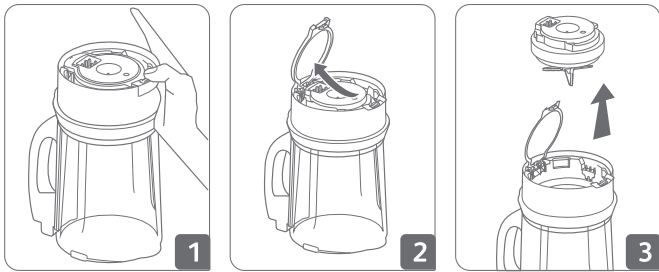
Disassemble the Exhaust Cover



Cleaning the Blender Jar heating Base

If the bottom residue in the blender jar is difficult to clean during cleaning, the blade assembly can be disassembled for cleaning, and it needs to be installed back to its original position after cleaning.

Heating base removal process



- The blade is sharp, be careful when taking it out, and be careful not to hurt your hands.
- The blade assembly and blender jar can be rinsed with a brush and water. After cleaning, it must be installed back to its original position. If there is water at the bottom of the blade assembly, it needs to be blown or wiped dry before use

Cleaning the body

The surface of the body can be wiped clean with a wrung wet soft cloth. It is not advisable to use steel wool or hard cloth to wipe, so as not to cause surface scratches or coating peeling off.

- It is forbidden to wash the body directly with water, and it is strictly forbidden to immerse the body directly in water, so as to avoid water entering the body as it may cause malfunction or unexpected accidents.
- It is normal for the noise reduction enclosure to have slight steam.

Note:

- After the blender is completely cleaned, in order to prevent the residual water from causing peculiar smell, please dry it thoroughly with a soft dry cloth.
- When not in use for a long time, please place the blender in a dry and ventilated place.

PRODUCT TECHNICAL SPECIFICATION DETAILS	
Model	iChef Blender Heater
Voltage / Frequency	230 V AC / 50 Hz
Power (Motor)	1000 W
Power (Heating element)	1300 W
Capacity of Blending Jar	1.4 L for Cold blending 1 L for Hot blending
Capacity of Grinding Jar	300 ml

Note:

In view of the USHA policy of continuous improvement. Specification may change without notice.

## TROUBLESHOOTING

Common malfunctions	Cause Analysis	Solution
The machine does not respond after power ON	Lid not closed	Put The lid on firmly
	The blender jar is not in place	Remove the blender jar and replace it
The display is ON and the machine does not work	Continuous work for a long time, motor overheating protection	Cool down to room temperature naturally, and operate according to the working time specified in the manual
The blade does not rotate after the machine is started	The added ingredients are too large or too many ingredients	Take out the ingredients and cut them into small pieces or reduce the amount of ingredients according to the recipe requirements
Overflow occurs during work	Lid seal missing or incorrectly installed	Install the sealing ring correctly according to the instructions
	Press the wrong function button or add too much or too little water	Cut off the power, clean up the ingredients in the jar, re-add the ingredients as required and start working again
	Voltage too high	Using a Home Voltage Stabilizer/ Wait for suitable voltage in liner
	Added too many ingredients	Add ingredients according to instructions
The crushing effect is not good or there is a whole grain left	Added too little water	Add drinking water according to water level requirements
	Voltage too low	Using a Home Voltage Stabilizer
	Used hard food	Cut off the power and remove the hard food

	Added too many ingredients	Add ingredients accordingly
	Press the wrong function button	Operate correctly according to the instructions
	Too much water or ingredients added	Add ingredients and drinking water according to the instructions
	Check if the lid is clean	Clean the lid
After work, the food is undercooked	Check whether the waterproof lower coupler is flooded	Wipe off the water in the waterproof lower coupler with a dry cloth or let it dry naturally
Hot drink function button is not working	Abnormal temperature sensor	1. Check whether the blend jar is in place; 2. Check whether the waterproof lower coupler is flooded; 3. Check whether water has entered the base of the blender jar.

## WARRANTY CARD

This appliance has a warranty for 2 years on product and 5 years on motor against all manufacturing defects from the date of sale. In the event of any complaint, please contact USHA Care at toll-free no. 1800 1033 111.

**The warranty is valid only when:**

1. The appliance has been installed, used and maintained in accordance with the instruction manual.
2. The warranty card and cash memo duly signed by the Authorized Dealer are presented with the complaint.
3. The appliance has not been opened or tampered with, by any unauthorized person.

**This warranty does not apply for:**

1. Damages due to chipping, peeling, plating and denting.
2. Breakage or damage to components made out of Bakelite, Urea, ABS, SAN and such plastic materials, rubber parts and cord.
3. Normal wear and tear of parts.
4. Damage resulting from accidents, mishandling or negligence on part of the customer. Liability for consequential loss or damage is neither accepted nor implied.

S. No: \_\_\_\_\_ DATE: \_\_\_\_\_

CASH MEMO: \_\_\_\_\_

OWNER'S NAME & ADDRESS: \_\_\_\_\_

\_\_\_\_\_

DEALER'S NAME AND ADDRESS: \_\_\_\_\_

\_\_\_\_\_

Dealer Stamp